

Connecticut - Proposed Bat Gate Projects and Preliminary Budget

July 2017

Tory Cave – New Milford, Connecticut

Tory's Cave (Figure 1) is a sinkhole cave situated on a hillside. The diameter of the entrance is about 20 feet across. There is a hiking trail leading from the roadside parking area to the cave entrance which is approximately 150 yards from the road with about a 100 foot climb. Materials and tools needed at the site can be moved by hand or by all-terrain utility vehicle. A simple arch shaped gate is proposed for this site that would provide security and habitat protection while allowing bats to freely pass and swarm above the cave entrance. This project is of the highest priority among those proposed. Estimated cost: \$6,000.



Figure 1

Roxbury Iron Mine – Roxbury, Connecticut

Roxbury Iron Mine is an abandoned mine complex that was gated in 1999. Vandals have damaged a gate at one of the main entrances (Figure 2). In the winter, running water pours over the gate causing significant ice build-up. The proposed solution is to re-do this gate and position it back away from the source of water. Figure 3 illustrates the short tunnel leading to the gate where a new gate could be located closer to or at the exterior (person pictured in kneeling). Access by foot is by an approximately 1 mile long foot path. There is another shorter approach that was utilized when this site was first gated in 1999 that would accommodate an all-terrain utility vehicle for moving material and tools to the site. Estimated cost: \$3,000.



Figure 2

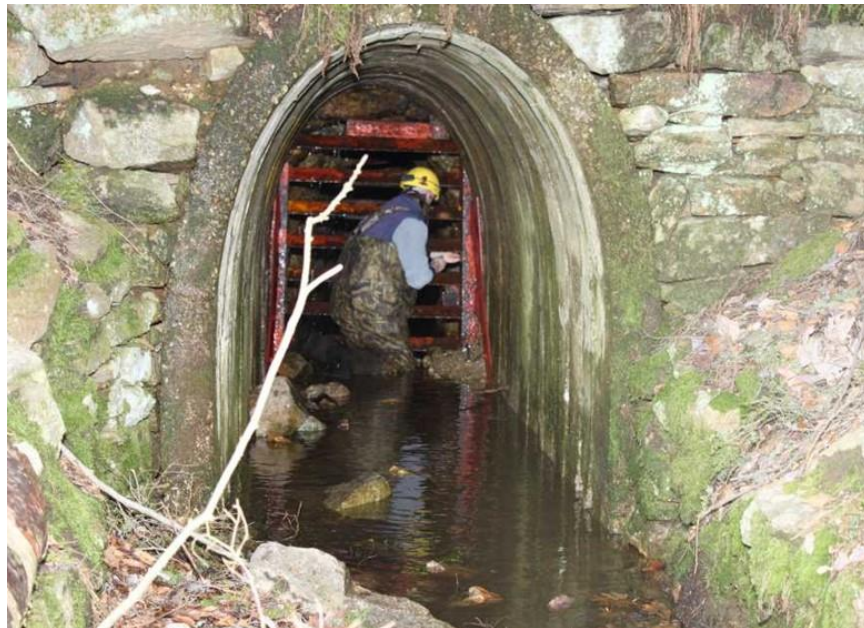


Figure 3

Crystal Lake – Winchester, Connecticut

The hibernaculum located at Crystal Lake is an aqueduct which is part of the municipal public water supply infrastructure. The entrance, which is relatively small, is situated in a ravine that leads out to a reservoir (Figure 4). Figure 5 provides the added perspective of how the entrance is set in the hillside. Access to this site is a woods road drive with a pick-up truck then a about a 15 minute hike. All-terrane utility vehicles may also be utilized. Horizontal angle iron bars are proposed at this site to provide security, habitat protection while permitting bats free passage through the gate. Estimated cost: \$7,000.



Figure 4



Figure 5

Old New-gate Prison & Copper Mine, Granby, Connecticut

This former mine has an existing iron gate with 2 hinged doors at the base of cement stairs. The stairs and gate were constructed as an entrance for guided public tours (Figure 6). Access to this site is easy with ample parking and staging areas nearby. The proposal is to cut the vertical bars out of a section out of the gate and weld them back in a horizontal orientation. Doing so would improve bat passage while retaining the existing aesthetics. Estimated cost: \$1,000.



Figure 6

Twin Lakes Caves – Salisbury, Connecticut

The Twin Lakes area has two natural sink holes: Unnamed Cave (Figure 7) and a cave called Hell's Hole (Figure 8). Access to each is via a woods trail that can accommodate a truck or UTV. Unnamed Cave would require a 12x12 cupola. Estimated cost: \$15,000

The nearby Hell's hole would require a flat front and roof to cover the entrance. Estimated cost: \$7000.



Figure 7 (Unnamed Cave)



Figure 8 (Hell's Hole)

Summary of Preliminary Estimates:

Tory's Cave	6,000
Roxbury Iron Mine	3,000
Crystal Lake	7,000
Old New-gate Prison and Copper Mine	1,000
Twin Lakes – Unnamed Cave	15,000
Twin Lakes – Hell's Hole	7,000
Total	\$39,000

The estimated total of the proposed projects exceeds the amount of money available for Connecticut. All the projects are included here, however, in case one or more of the other projects in the region cannot be completed. Projects are listed in descending order of priority with Tory's Cave being the top priority, followed by Roxbury Iron Mine, etc. Projects will be addressed in order of priority provided that final estimates are consistent with the preliminary figures, that sufficient funds will be available, and that landowner commitments are secured.

Land owner agreements are in process and will be completed prior to construction. Copies will be provided with the performance report.

No ground disturbing activities are proposed as part of these projects, therefore no State Historic Preservation consultation is required.